



Milan, 05/2020

Press Release

The value of details

There are great novelties at **PLH®**. The dynamic Milanese company that has reinvented the control switch plate, making it a decorative element as well as a highly functional one, launches four new products, rigorously Made in Italy. These will stand out and **add beauty and luxury to the spaces we inhabit**.

The first product is the **Keyboard** collection that renews and completes the iconic electric plates family presented in 2011 with a new design that combines refined décor with state-of-the-art technology. The plate focuses on design, where the buttons look like the keys of the computer keyboard, with a **playful and contemporary allure**.

Meticulous attention to project design and development lies behind this aesthetic expression. The body of the plate is machined from solid with the most advanced CNC technology and subsequently polished, micro-sanded using glass spheres to give it a refined material texture and lastly, is anodized in different colours from rose, silver, light gold to deep grey. The keys are aligned rigorously in a grid that can contain from 1 to 4 led backlit buttons. They too are in anodized aluminium with black matte finish and are engraved with numbers in computer style.

The colour combinations and finishes of the collection **can be customized** at will and the collection is completed by a round plate compatible with Berker R. classic components.



Keyboard Collection

keypad with push buttons in aluminium 6082 anodized and sandblasted rose.

A new material was introduced, after a prolonged testing phase, **316L stainless steel**, a novelty for PLH®, suitable for every collection using the same manufacturing process.

The collection is available in natural finish, satin or glossy for the plates and diamond for the Neo collection or with **PVD - Physical Vapour Deposition - protection**, a remarkable finish for both indoors and outdoors.

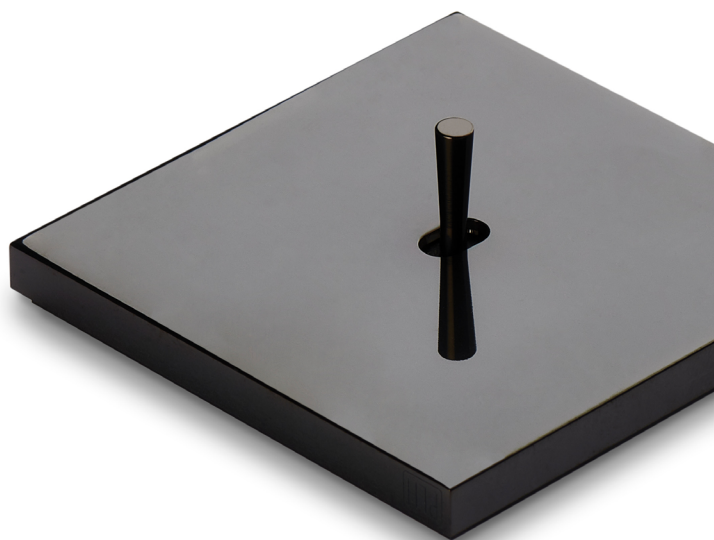
The characteristics of these plates, obtained through a physical process, are better than the ones acquired with any chemical or electrochemical treatment and also, this **sheeting is completely sustainable**, it has a low ecological footprint and is hypoallergenic. This protective treatment is realised by the Italian company **Protim®**, European leader in its field.

The steel finishes available are The steel finishes available are satin, pearl, glossy finishes and different nuances - gun metal, gold, champagne, warm black, copper bronze, stainless steel and iridescent - obtained through a high-tech

process called **IS - Pro®: Ion Shields Protection**. PLH® also offers another advanced protective sheeting that, in addition to its intended use, cares for the users' health: the **Abaco® plate with antibacterial finish**, also invented by Protim®; thanks to a special process within the PVD - Physical Vapour Deposition treatments, it can inhibit and even eliminate the proliferation of bacteria. PLH® offers it in three different colours - gold, gray05 and gun metal - and with a guarantee for a prolonged period of bacteria-free, validated by rigorous scientific testing. The Abaco® plate is an effective device against the diffusion of contact-borne diseases.

The enhancement of the **Skin collection**, a PLH® bestseller, completes the 2020 highlights; this collection is based on aesthetic and technological research and on the collaboration with companies and experts that operate in different industries with the **same meticulous attention to detail** as Enrico Corellis' company. The main feature of this collection is the 2 mm depression on the front of the aluminum, brass or stainless-steel plate, a technical detail specifically studied to **make setting-in** other materials possible with an evocative decorative effect. This has been rendered possible by the team effort undertaken with the cooperation of many companies that operate in the metal, fabric, wood and even mirror fields such as De Castelli, Kvadrat, Haute Material, SAI Industry e Antique Mirror.

Most recently PLH® has partnered with **Mutaforma**, a creative high-tech Milanese company, specialised in micromosaic coatings that has brought an elegant, luminous mosaic of only 2 mm thickness to the realisation of a plate covering including graphic motifs especially designed for PLH®.



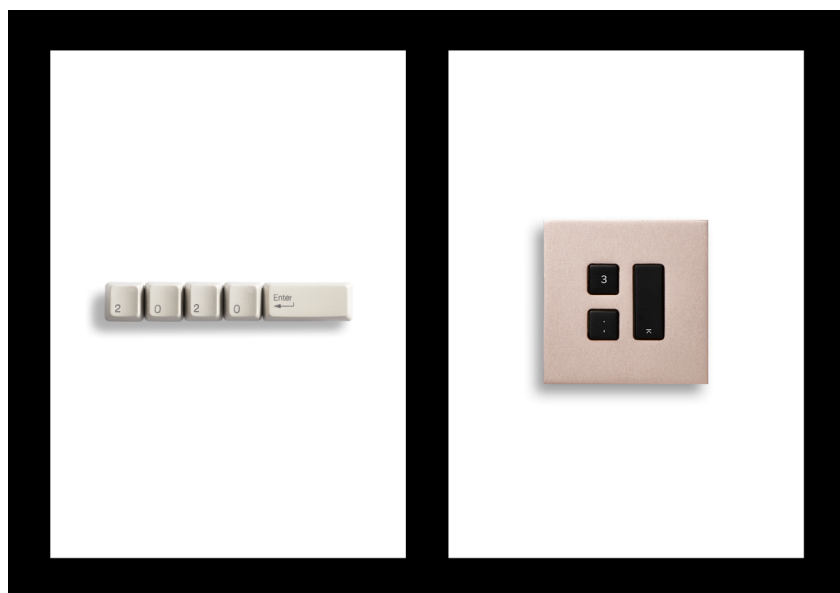
MakeUp Collection

*keypad with toggle push buttons,
stainless steel 316L polished IS-Pro® warm black.*

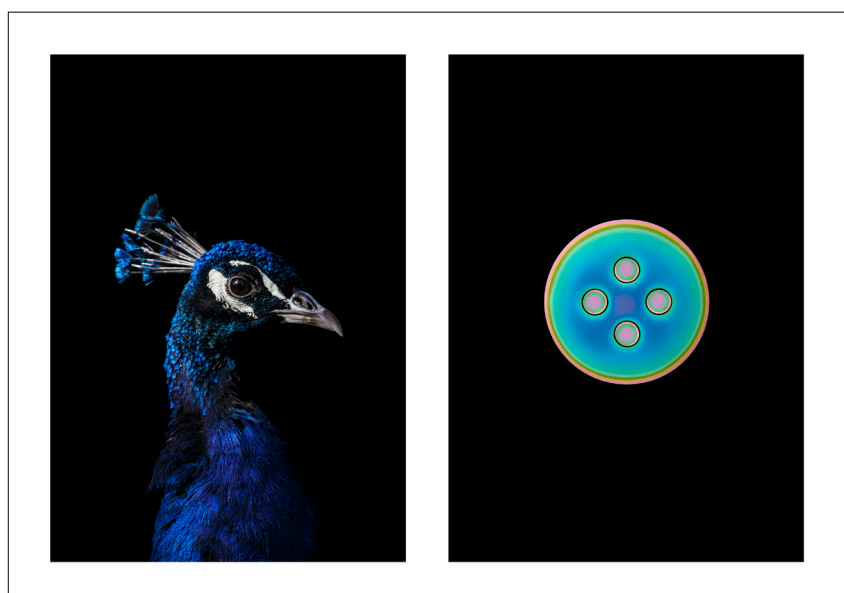


Skin round Collection

*keypad with push buttons
aluminium 6082 anodized and Mutaforma skin Cameo Rosso.*



Diptych 1



Diptych 2



Diptych 3



n.1



n.2



n.3



n.4



n.5



n.6



n.7



n.8



n.9



n.10



n.11



n.12



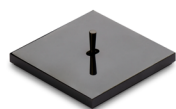
n.13



n.14



n.15



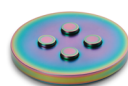
n.16



n.17



n.18



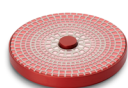
n.19



n.20



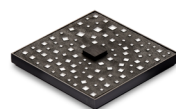
n.21



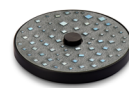
n.22



n.23



n.24



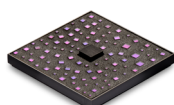
n.25



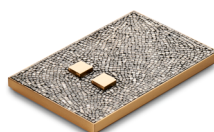
n.26



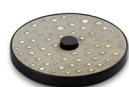
n.27



n.28



n.29



n.30

Photo by Alessandro Gaja

Collections and finishes

1. **Keyboard collection:** keypad with push buttons in aluminium 6082 anodized and sandblasted deep grey.
2. **Keyboard collection:** keypad with push buttons in aluminium 6082 anodized and sandblasted silver.
3. **Keyboard collection:** keypad with push buttons in aluminium 6082 anodized and sandblasted rose.
4. **Keyboard collection:** keypad with push buttons in aluminium 6082 anodized and sandblasted light gold.
5. **Keyboard collection:** frame for sockets in aluminium 6082 anodized and sandblasted silver.
6. **Keyboard collection:** frame for sockets in aluminium 6082 anodized and sandblasted silver.
7. **MakeUp collection:** keypad with push buttons in stainless steel 316L IS-Pro® grey 05.
8. **Neo collection:** push buttons in stainless steel 316L IS-Pro® gold.
9. **MakeUp collection:** frame for sockets in stainless steel 316L brushed IS-Pro® copper bronze.
10. **MakeUp collection:** keypad with push buttons in stainless steel 316L velvet IS-Pro® champagne.
11. **Collezione Neo:** comando a pulsante in acciaio inox 316L IS-Pro® gun metal.
12. **Slim collection:** keypad with push buttons in stainless steel 316L velvet IS-Pro® gun metal.
13. **MakeUp collection:** frame for sockets in stainless steel 316L polished IS-Pro® copper bronze.
14. **MakeUp collection:** frame for sockets in stainless steel 316L polished IS-Pro® copper bronze.
15. **Neo collection:** push buttons in stainless steel 316L IS-Pro® champagne.
16. **MakeUp collection:** keypad with toggle push buttons in stainless steel 316L polished IS-Pro® warm black.
17. **Neo collection:** push buttons in stainless steel 316L IS-Pro® silver.
18. **Slim collection:** keypad with push buttons in stainless steel 316L brushed IS-Pro® and laser engraving.
19. **MakeUp collection:** keypad with push buttons in stainless steel 316L velvet IS-Pro® iridescent.
20. **Neo collection:** push buttons in stainless steel 316L IS-Pro® copper bronze.
21. **Neo collection:** push buttons in stainless steel 316L IS-Pro® iridescent.
22. **Skin collection:** keypad with push buttons in aluminium 6082 anodized and Mutaforma skin Cameo Rosso.
23. **Skin collection:** keypad with push buttons in aluminium 6082 painted RAL9003 and Mutaforma skin Incastonato Floreale - Micro edition.
24. **Skin collection:** keypad with push buttons in aluminium 6082 anodized and Mutaforma skin Veneziana Nero - Titanio - Micro edition.
25. **Skin collection:** keypad with push buttons in aluminium 6082 anodized and Mutaforma skin Veneziana Grigio - Azzurro - Micro edition.
26. **Skin collection:** keypad with push buttons in natural brass protected and Mutaforma skin Incastonato Oro.
27. **Skin collection:** keypad with push buttons in stainless steel 316L polished IS-Pro® and Mutaforma skin Veneziana Oro - Micro edition.
28. **Skin collection:** keypad with push buttons in aluminium 6082 anodized and Mutaforma skin Veneziana Viola - Micro edition.
29. **Skin collection:** keypad with push buttons in natural brass protected and Mutaforma skin Incastonato Nero - Titanio.
30. **Skin collection:** keypad with push buttons in aluminium 6082 anodized and Mutaforma skin Veneziana Verde - Titanio - Micro edition.

Diptych

1. **Keyboard collection:** keypad with push buttons in aluminium 6082 anodized and sandblasted rose.
2. **MakeUp collection:** keypad with push buttons in stainless steel 316L IS-Pro® Iridescent.
3. **Skin Collection:** civil series with push-button control in 6082 white painted aluminum RAL 9003 with diamond-shaped TILLA® micro-tesserae coating and decorated with nanostrata of pigments and metals - Disegno Incastonato Floreale - Micro edition.



| Press Release 05/2020



www.plhitalia.com



paola.castelli@plhitalia.com
communication@plhitalia.com



@plhitalia

PLH® is brand of Epic Srl.
©2020 Epic srl, all right reserved.

Via F. Primaticcio, 8
20146 - Milan, Italy.
T. (+39) 02 48370030
F. (+39) 02 41291000
info@plhitalia.com

P. IVA CF IT 11987550156
REA: MI 1519622

All trademarks belong to their respective owners; third party brands, logos, product names, commercial names, corporate and company names mentioned are trademarks owned by their respective owners or registered trademarks of other companies and have been used for explanatory purposes only, without any aim of violation of the rights of Copyright in force.