



Neo

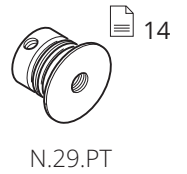
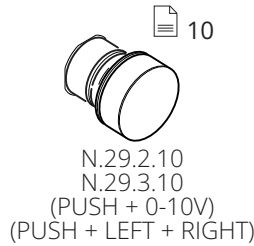
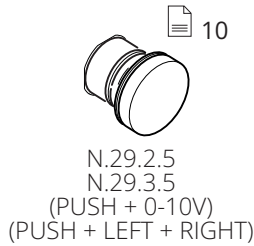
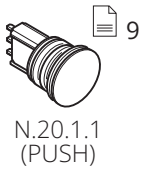
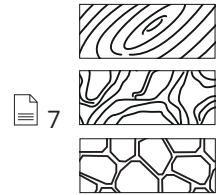
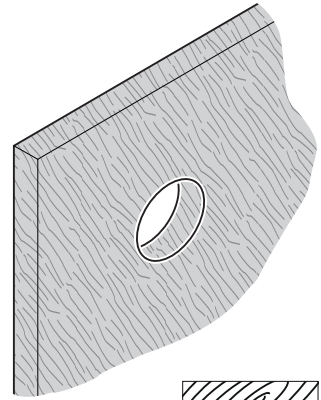
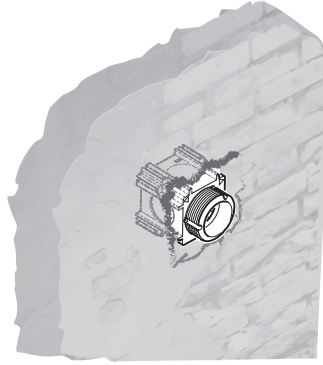
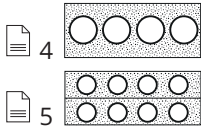
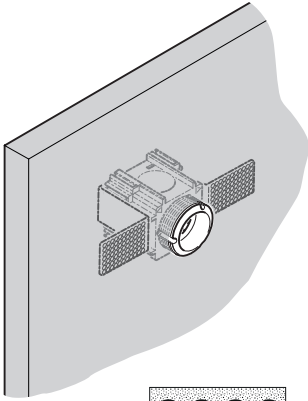
ISTRUZIONI DI MONTAGGIO
ASSEMBLY INSTRUCTIONS
INSTRUCTIONS DE MONTAGE
MONTAGEANLEITUNG
INSTRUCCIONES PARA EL MONTAJE
ИНСТРУКЦИИ ПО МОНТАЖУ
安装说明

Rev. 1.4_02/2026

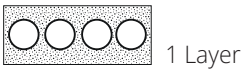
**Low Voltage Architectural Control Interface
(Decorative wall-mounted control device for Class 2 systems)**

This product is designed for Class 2 low-voltage systems (<24V DC); is assembled using UL Recognized components (switches, LEDs, plastics where applicable); complies with European directives (CE marking, where applicable)
Important Notice: This product is not UL Listed as a complete assembly.

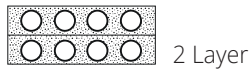
Indice - Index - Index - Inhaltsverzeichnis - Índice - Содержание - 索引



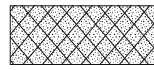
Legenda - Legend - Légende - Legende - Leyenda - Условные обозначения - 图例



1 Layer
Cartongesso / Gypsum board
Plaque de plâtre / Gipskarton
Panel de yeso / Гипсокартон
石膏板



2 Layer
Cartongesso / Gypsum board
Plaque de plâtre / Gipskarton
Panel de yeso / Гипсокартон
石膏板



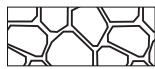
Muro / Wall
Mur / Ziegelwand
Muro / Кирпич
墙壁



Marmo / Marble
Marbre / Marmor
Mármol / Мрамор
大理石



Legno - mdf / Wood - mdf
Bois - mdf / Holz - MDF
Madera - mdf / Дерево - МДФ
木材 - MDF



Pietra / Stone
Pierre / Steinmauer
Piedra / Камень
石材

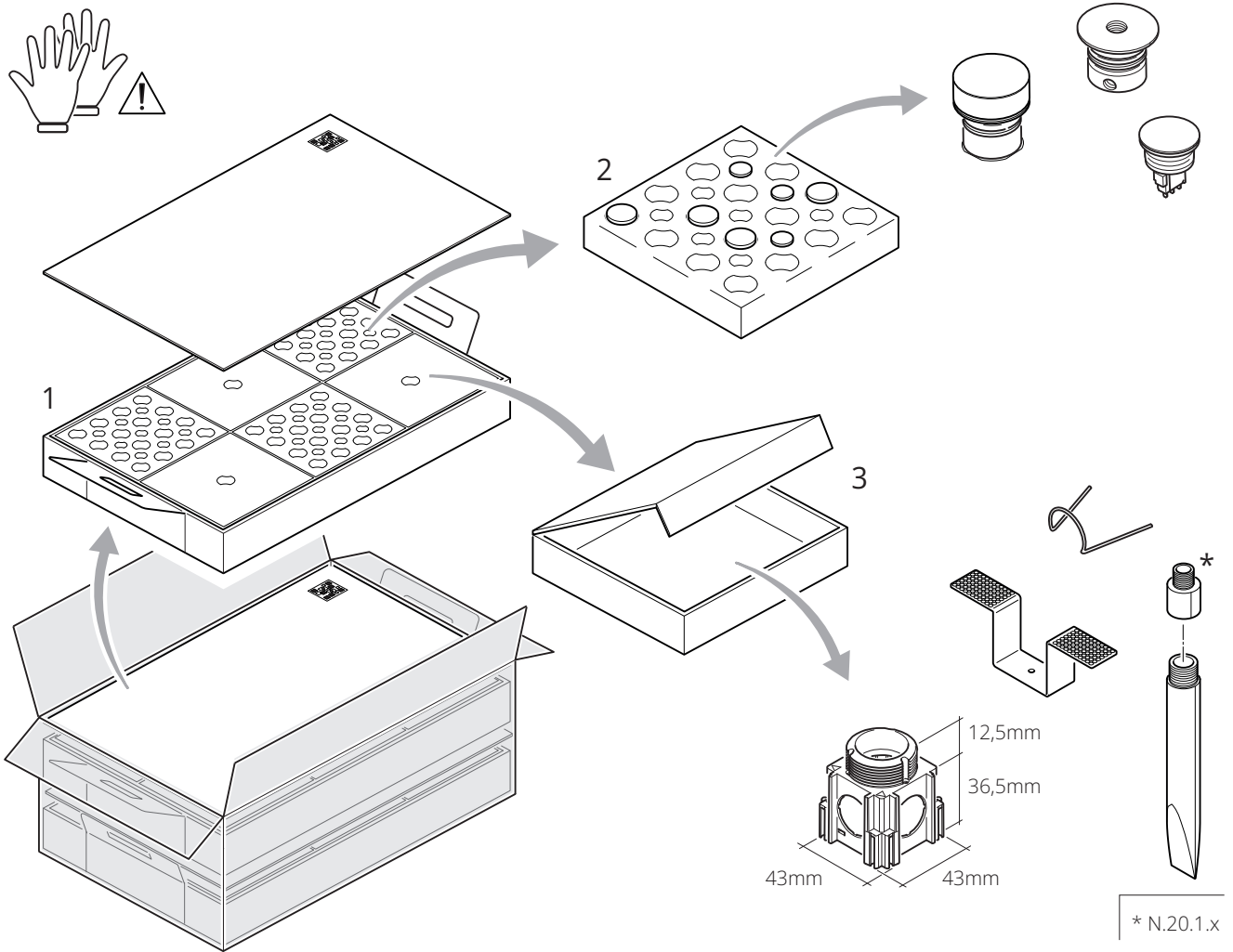


Cemento armato / Vibrated concrete*
Béton armé / Stahlbeton*
Cemento armado / Железобетон*
钢筋混凝土*

*Montaggio da definire con l'ufficio tecnico / Assembly to be defined with technical office / Montage à définir avec le bureau technique
*Montage mit dem Technischen Büro abzustimmen / Montaje que definirse con la oficina técnica / Монтаж согласовывается с техниче-ским отделом / *需与技术部确认安装

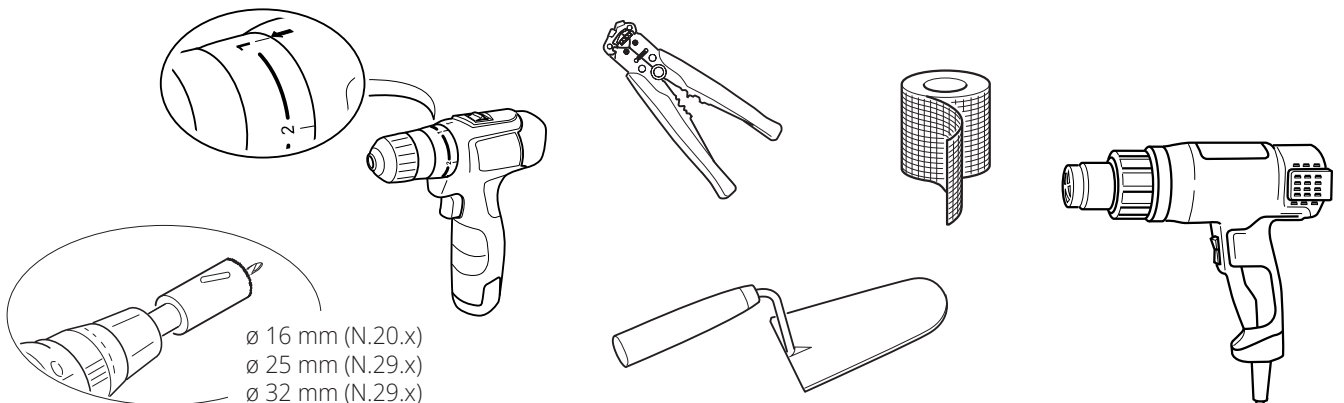
Kit - Kit - Kit - Bausatz - Kit - Комплект - 套件

- | | | |
|----------------------------|-----------------------------|------------------|
| 1. Layer con componenti | 2. Layer con adattatori | 3. Accessori |
| 1. Layer with components | 2. Layer with adapters | 3. Accessories |
| 1. Gabarit avec composants | 2. Gabarit avec adaptateurs | 3. Accessoires |
| 1. Lage mit Bauteilen | 2. Lage mit Adaptern | 3. Zubehör |
| 1. Estrado con componentes | 2. Estrado con adaptadores | 3. Accesorios |
| 1. Слой с компонентами | 2. Слой с адаптерами | 3. Комплектующие |
| 1. 含组件的分层 | 2. 含适配器的分层 | 3. 配件 |

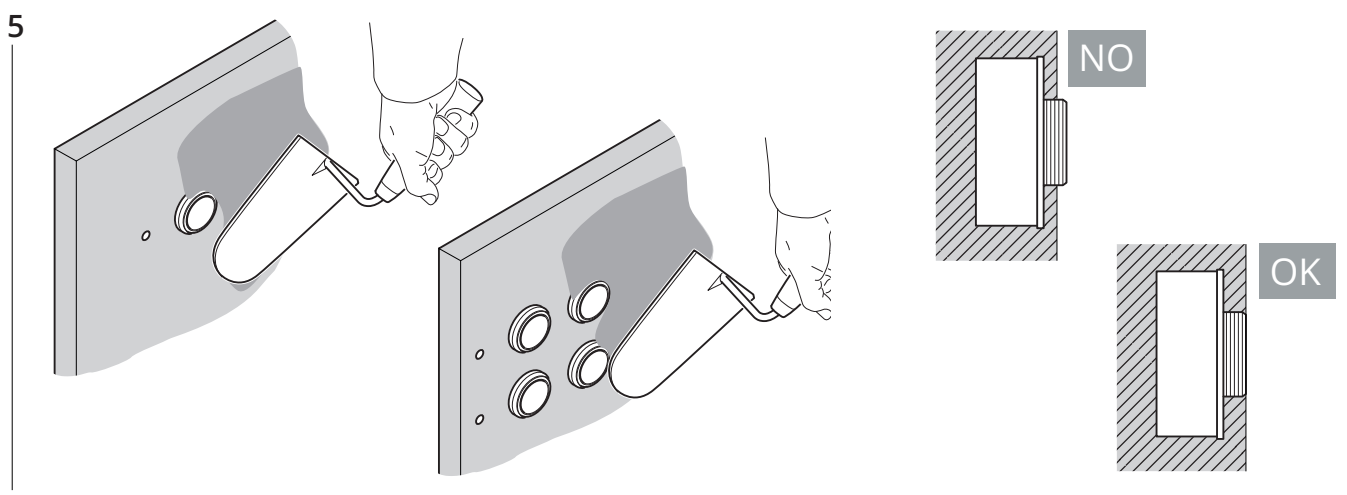
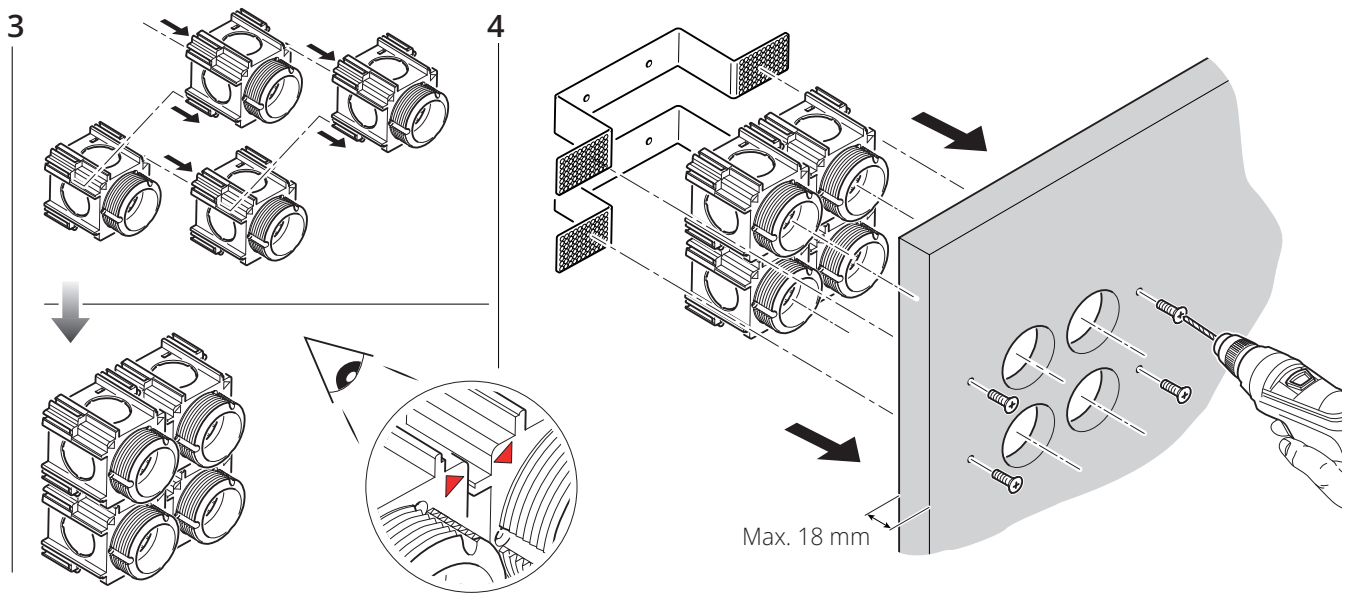
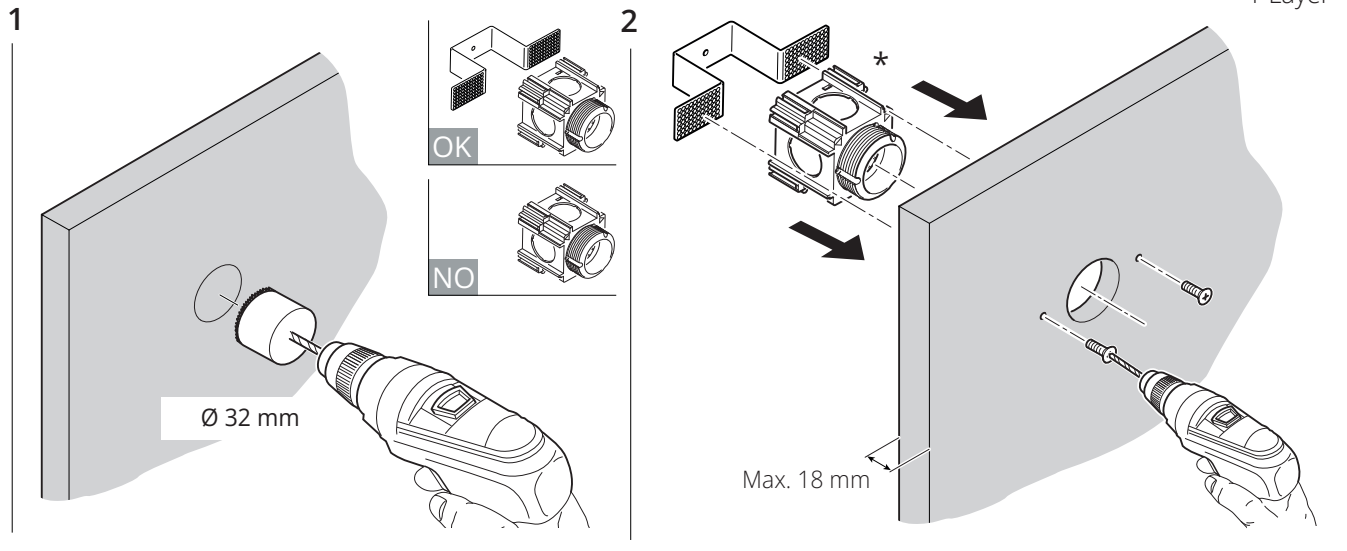
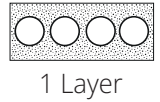


Utensili - Tools - Outils - Werkzeuge - Utensilios - Инструменты - 刀具

Non forniti da PLH® / Not provided by PLH® / Non fournis par PLH® / Nicht von PLH® geliefert / No suministrados por PLH® / Не поставляются компанией PLH® / 非PLH®提供

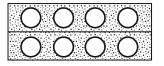


Montaggio cassaforma - Wallbox mounting - Montage du boîtier - Montage der Installationsdose -
 Montaje del encofrado - Монтаж каркасной коробки - 模板组装



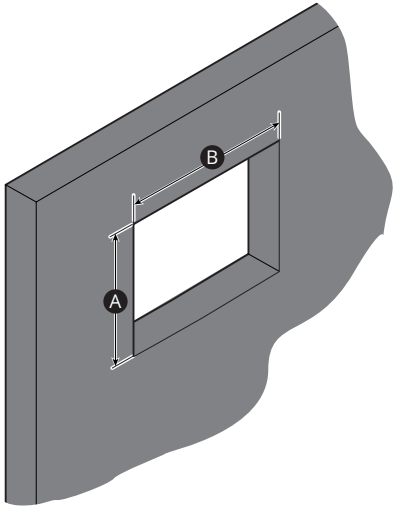
*Per la versione N.20 ordinare la scatola N.20.Box / For version N.20 order box N.20.Box / Pour la version N.20, commandez le boîtier N.20.Box
 *Für die Ausführung N.20 die Schachtel N.20 Box bestellen / Para la versión N.20, ordene la caja N.20.Box / Для версии N.20 заказать коробку N.20.Box
 *对于N.20版本，需订购盒子N.20.Box

$\geq 150 \times 50 \text{ mm}$

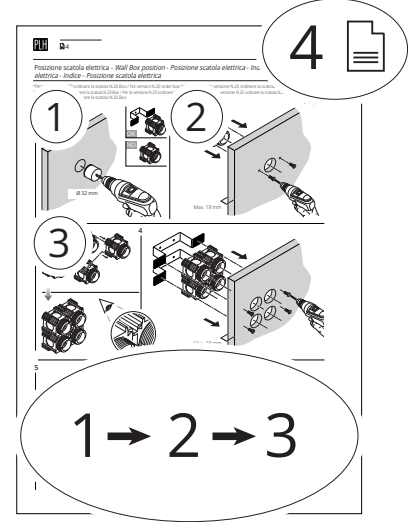
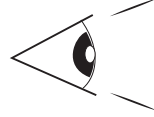


2 Layer

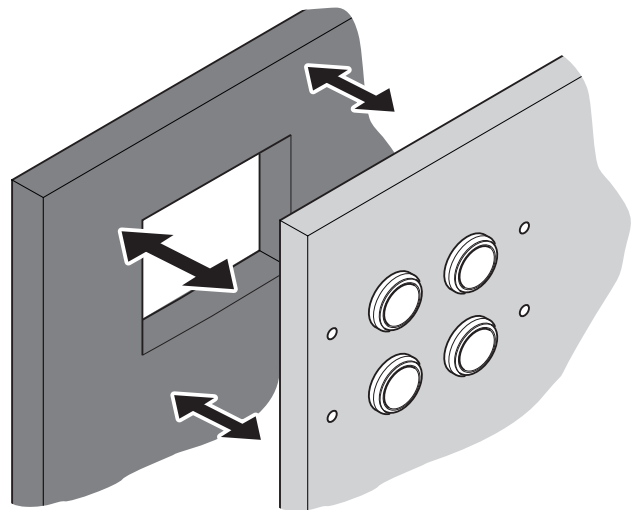
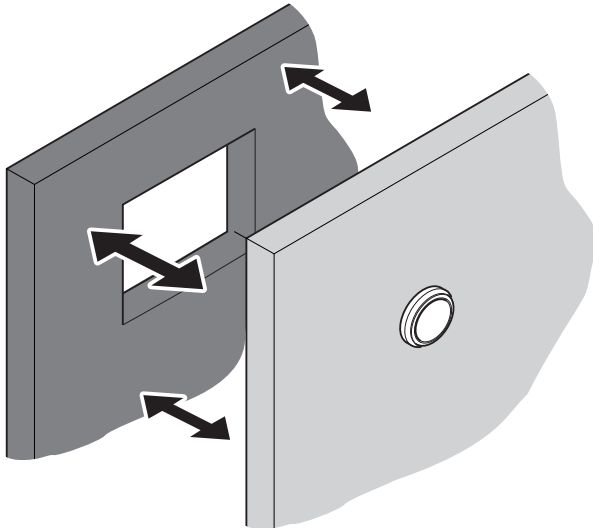
1



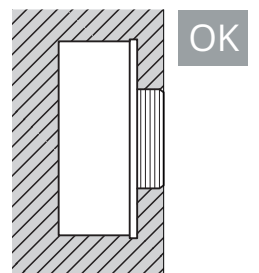
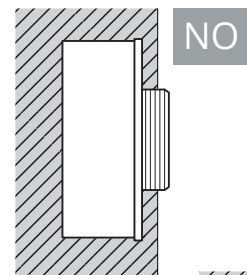
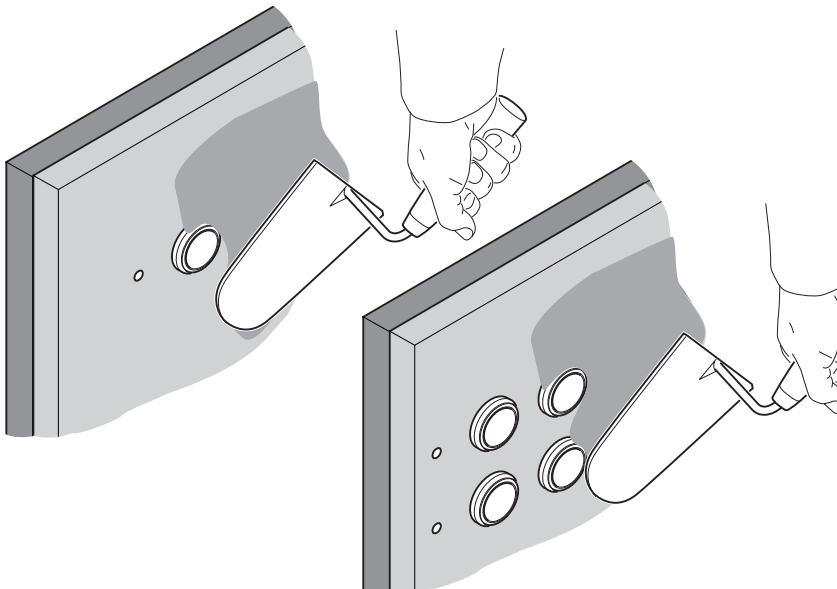
2

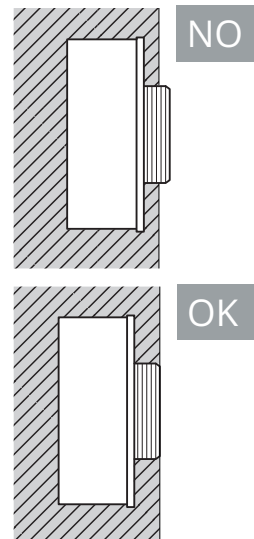
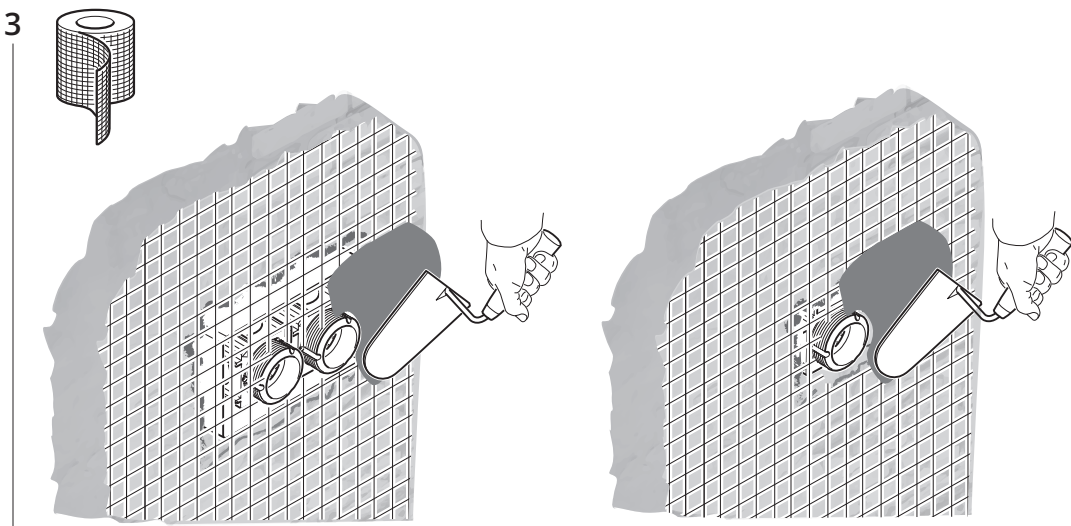
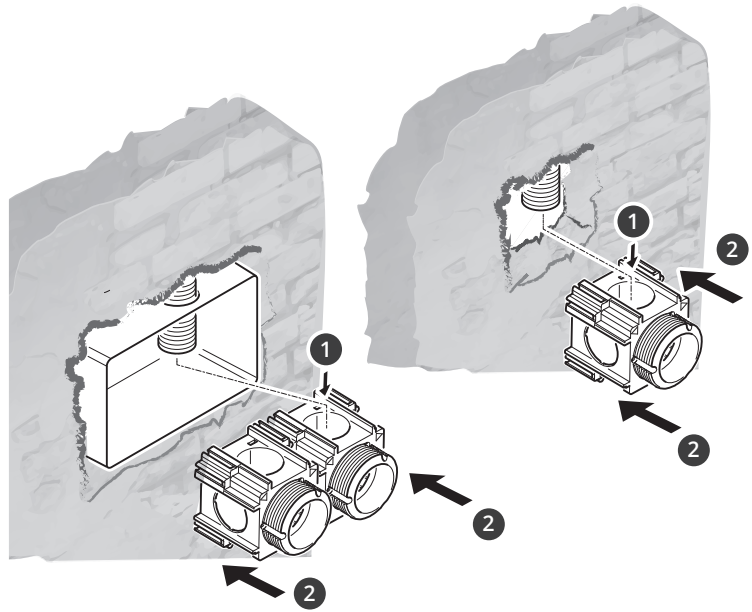
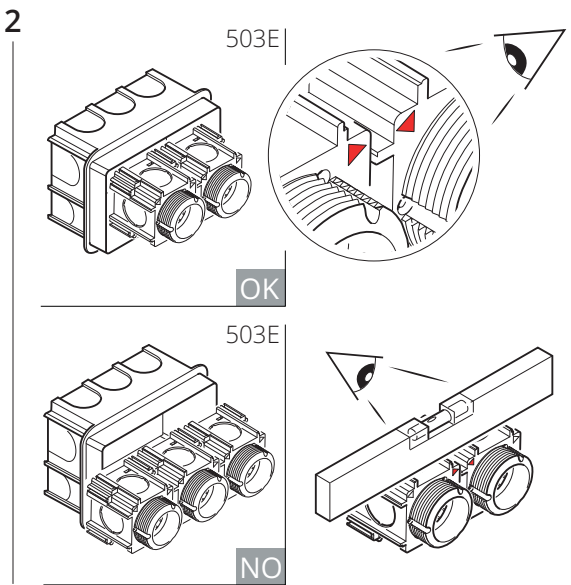
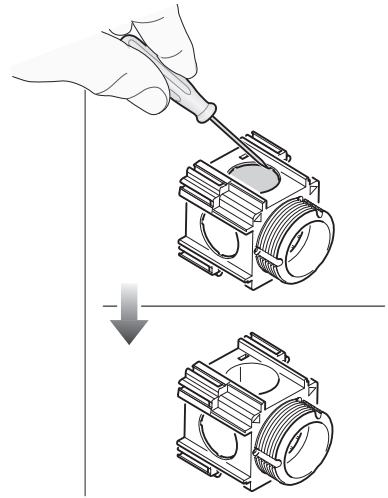
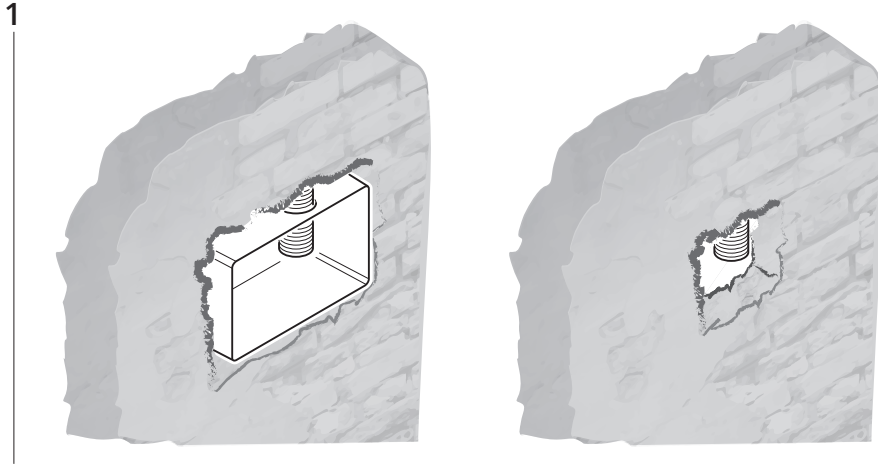
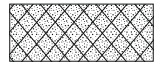


3



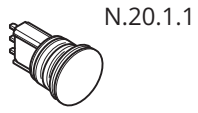
4







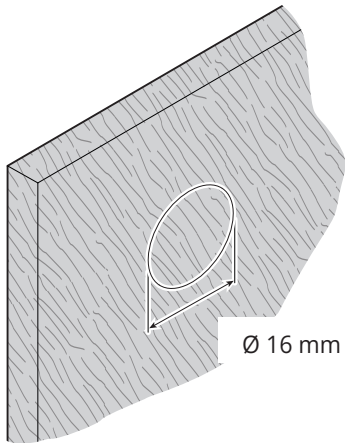
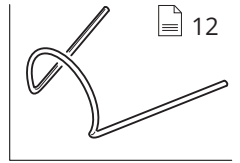
1



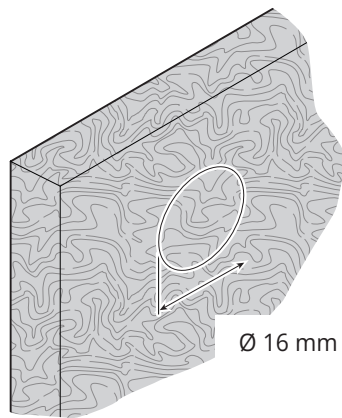
N.20.1.1



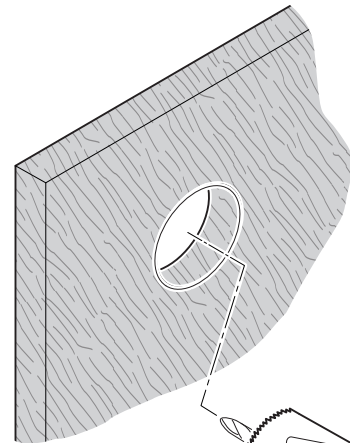
N.20.PT



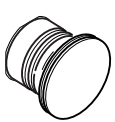
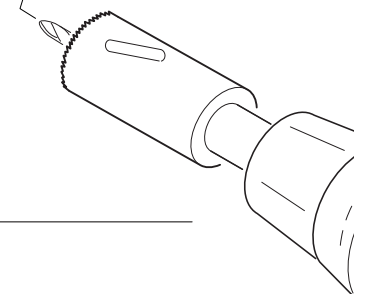
Ø 16 mm



Ø 16 mm



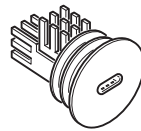
MIN. 10 mm



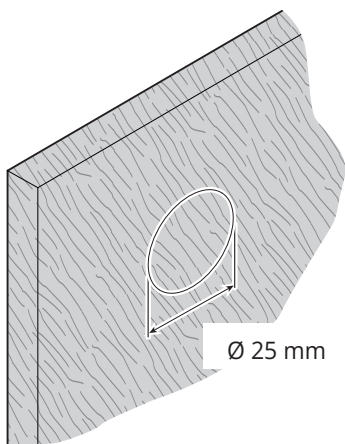
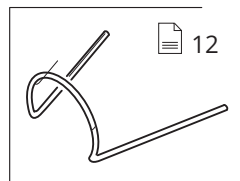
N.29.x



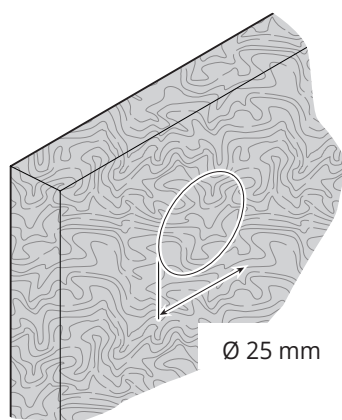
N.29.P



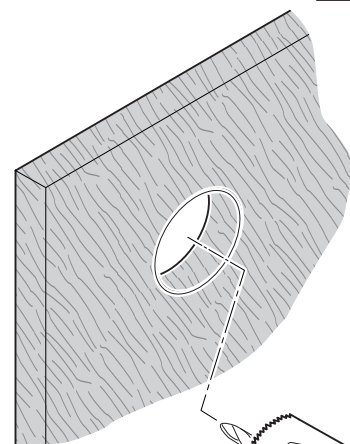
N.29.USBC



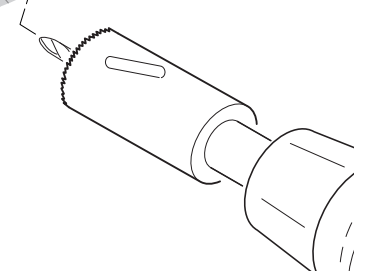
Ø 25 mm

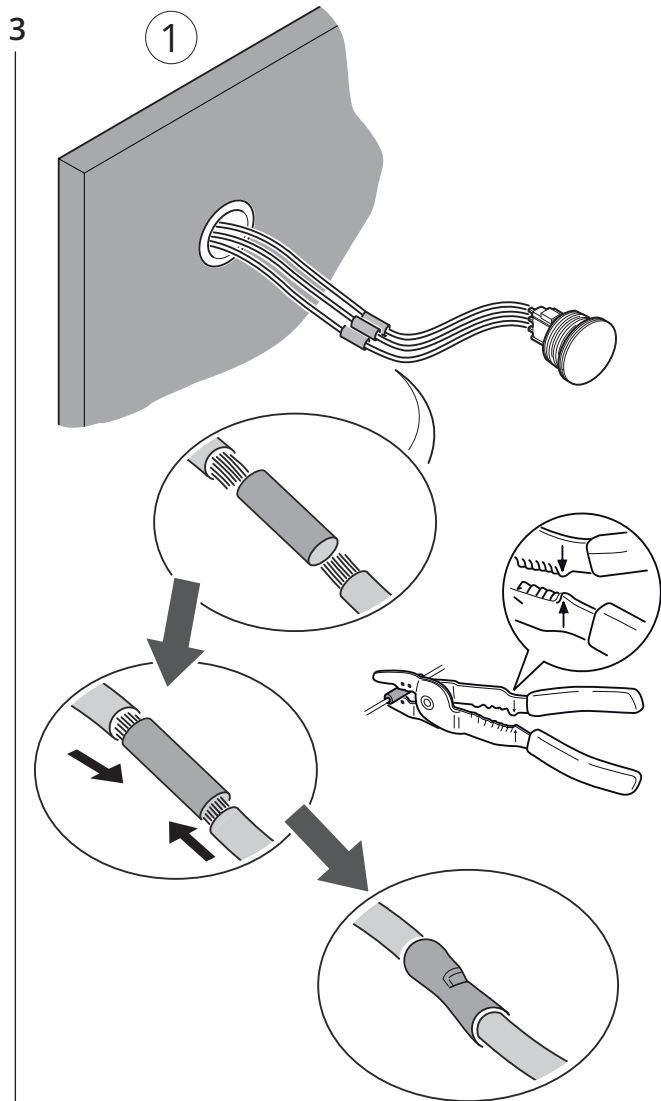
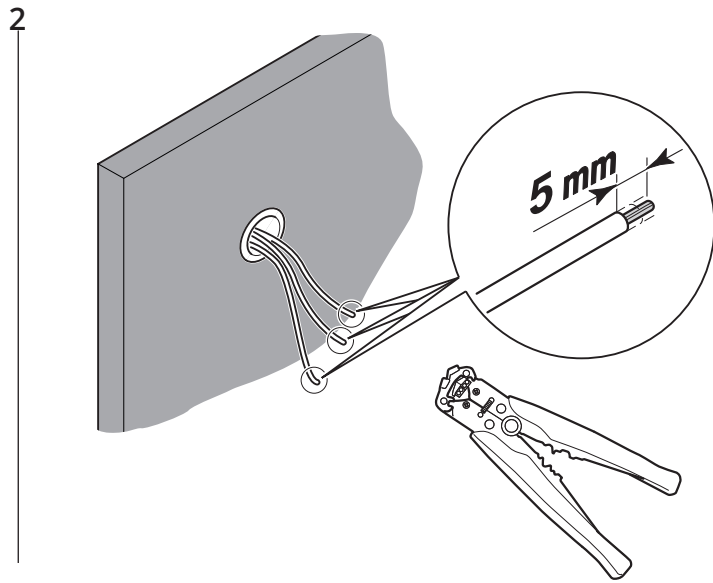
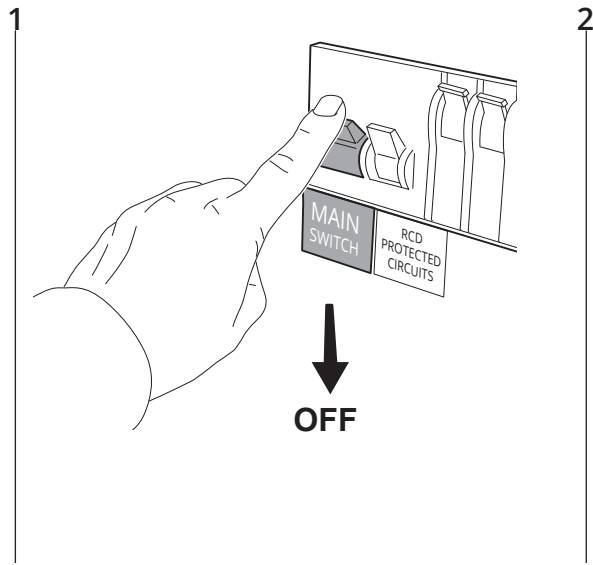


Ø 25 mm

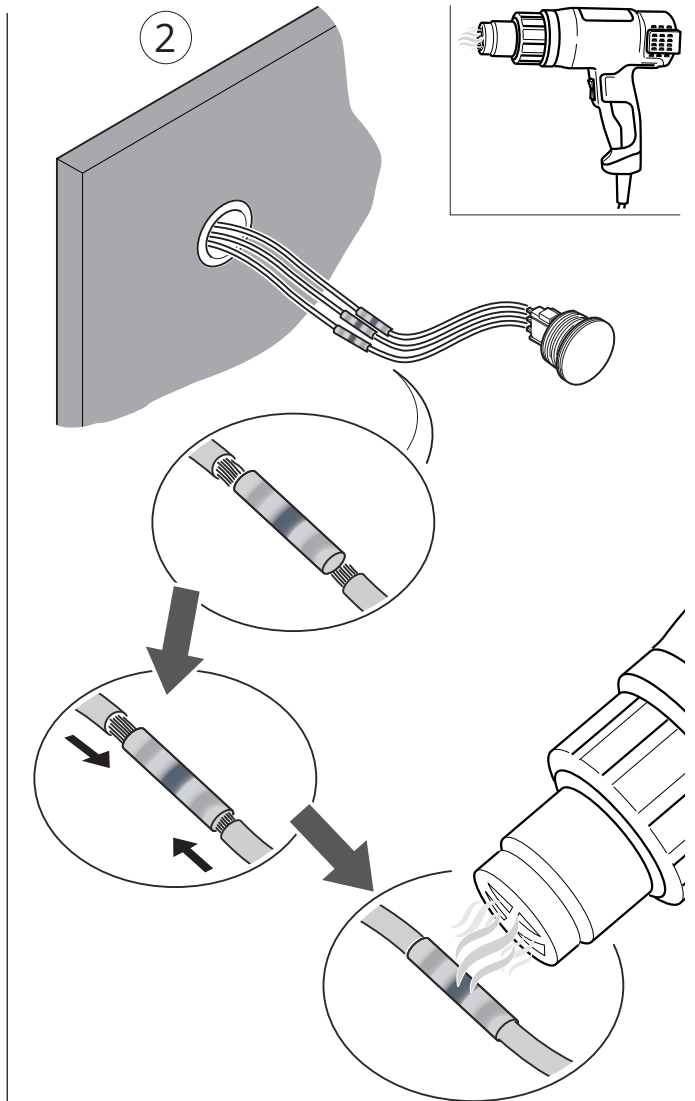


MIN. 10 mm





Crimp splice

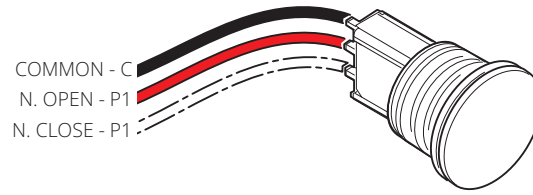


Shrink Connector With Solder

MAX. 24V

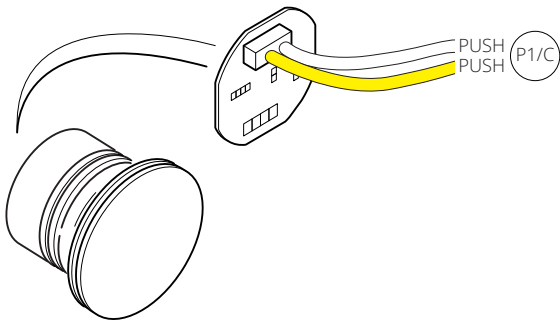
N.20.1.1.0
WITHOUT LED

Single push



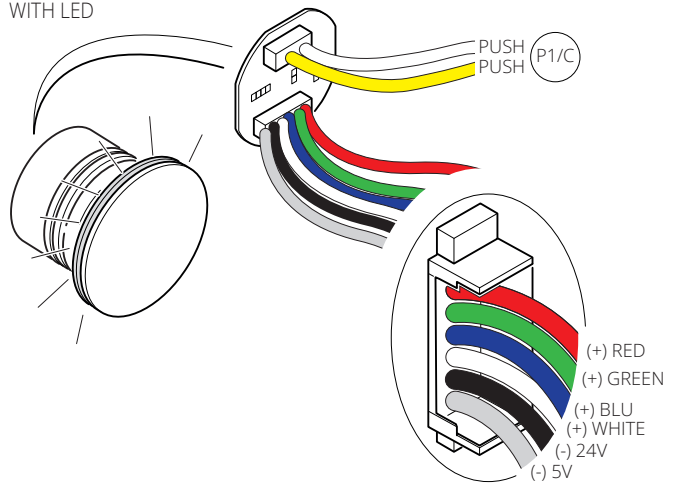
N.29.1.1.0
WITHOUT LED

Single push



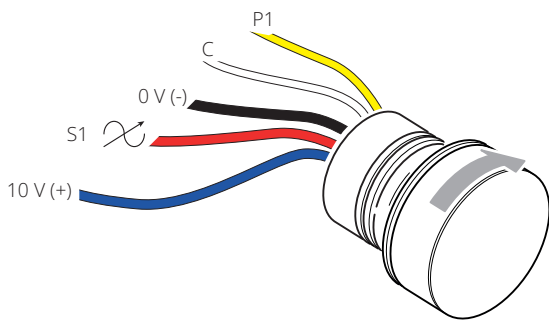
N.29.1.1.RGBW
WITH LED

Single push + RGBW LEDs



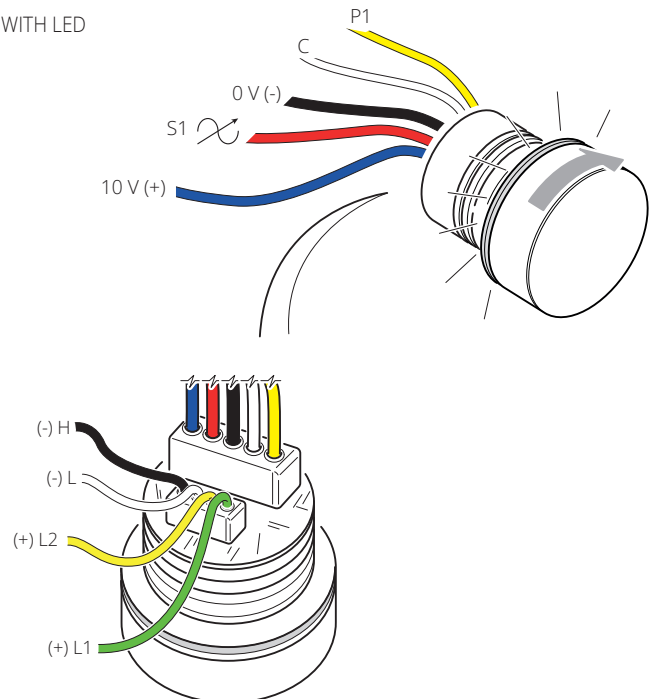
N.29.2.5.0
N.29.2.10.0
WITHOUT LED

Single push + 0-10 V



N.29.2.5.1/2
N.29.2.10.1/2
WITH LED

Single push + 0-10 V + 1/2 LEDs



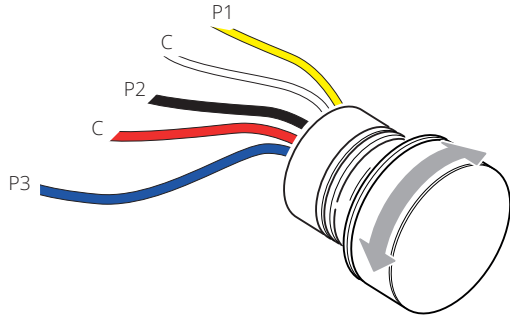
CONNECT THE WIRES TO DIMM THE BRIGHTNESS

○ MIN. | ● MIDDLE | ○● MAX.

! MAX. 24V

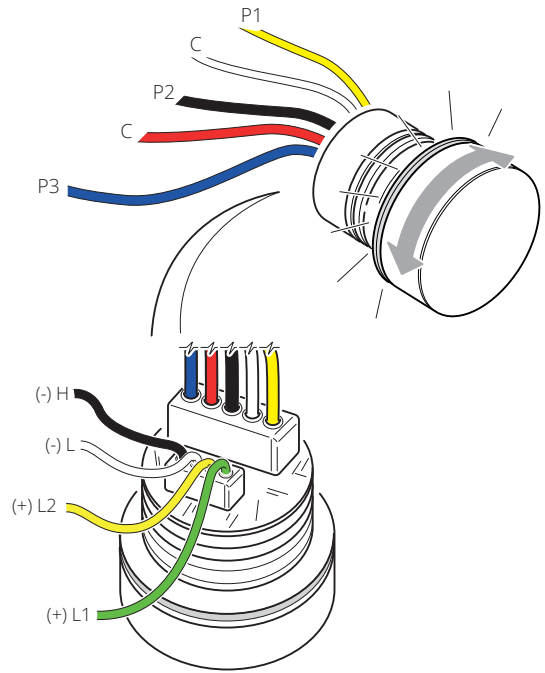
N.29.3.5.0
N.29.3.10.0
WITHOUT LED

Triple push



N.29.3.5.1/2
N.29.3.10.1/2
WITH 1/2 LED

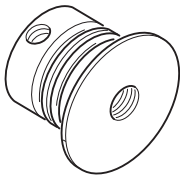
Triple push + 2 LEDs



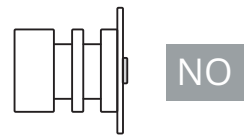
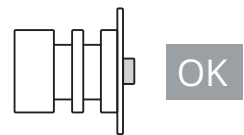
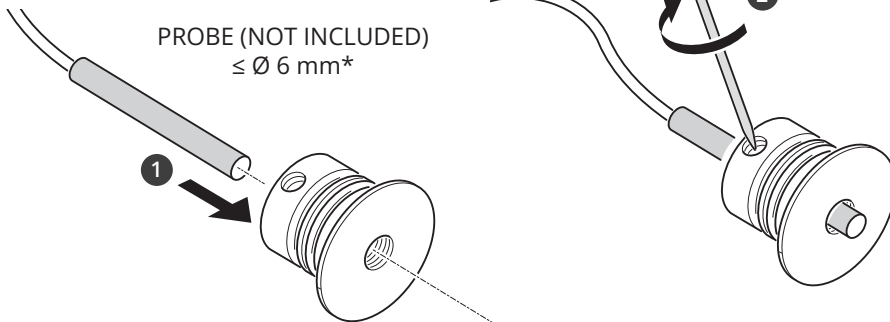
CONNECT THE WIRES TO DIMM THE BRIGHTNESS

○ MIN. | ● MIDDLE | ○● MAX.

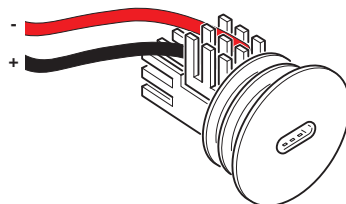
N.20.PT
N.29.PT



PROBE (NOT INCLUDED)
≤ Ø 6 mm*

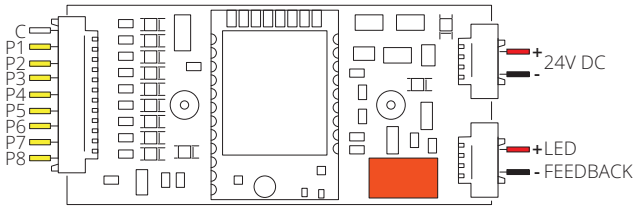


*Confermare in fase di ordine / To be confirmed at order stage / À confirmer lors de la commande / Bei der Bestellung zu bestätigen / A confirmar en fase de pedido / Подтвердить при оформлении заказ / 订购时确认



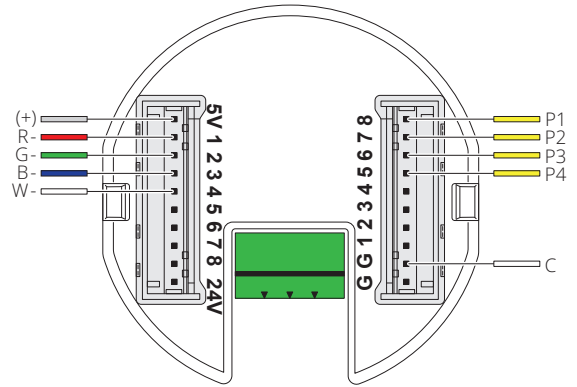
N.29.USBC

CONNECTION WITH PLH A.SP (Casambi)

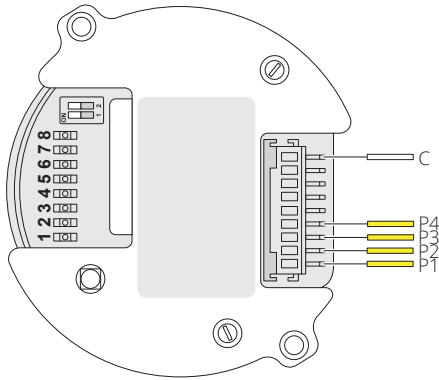


CONNECTION WITH CRESTRON C2N-UNI8IO

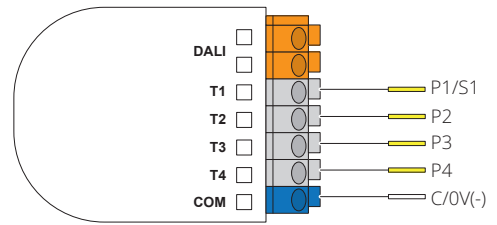
Specify on request the use of Crestron interface with led



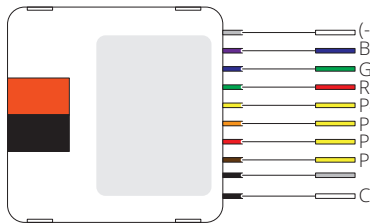
CONNECTION WITH LUTRON QSE-CI-WCI



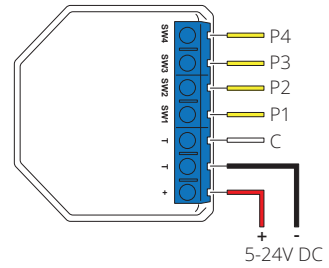
CONNECTION WITH LUNATONE MC+(DALI)



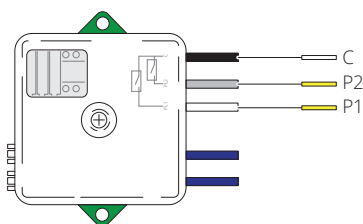
CONNECTION WITH THEBEN TA 8 S KNX(KNX)



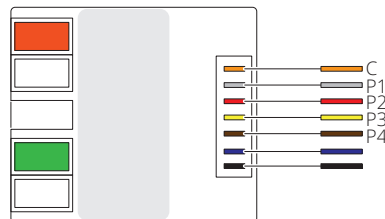
CONNECTION WITH SHELLY i4 DC



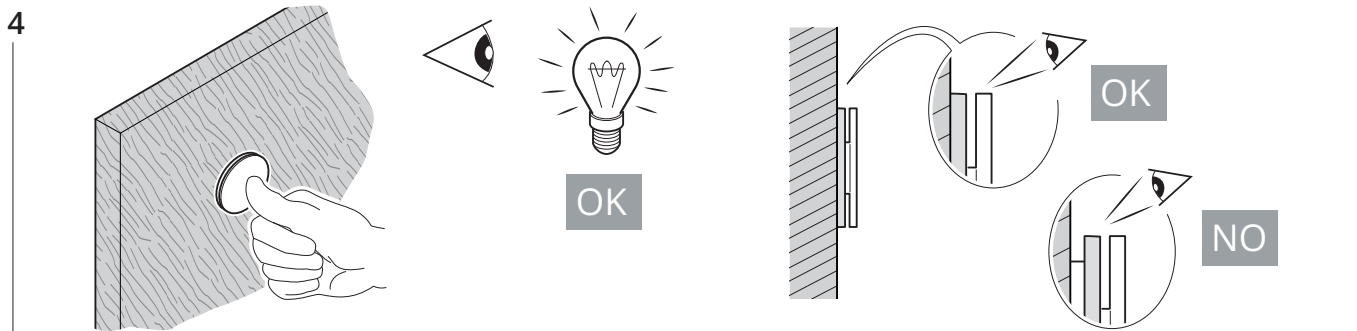
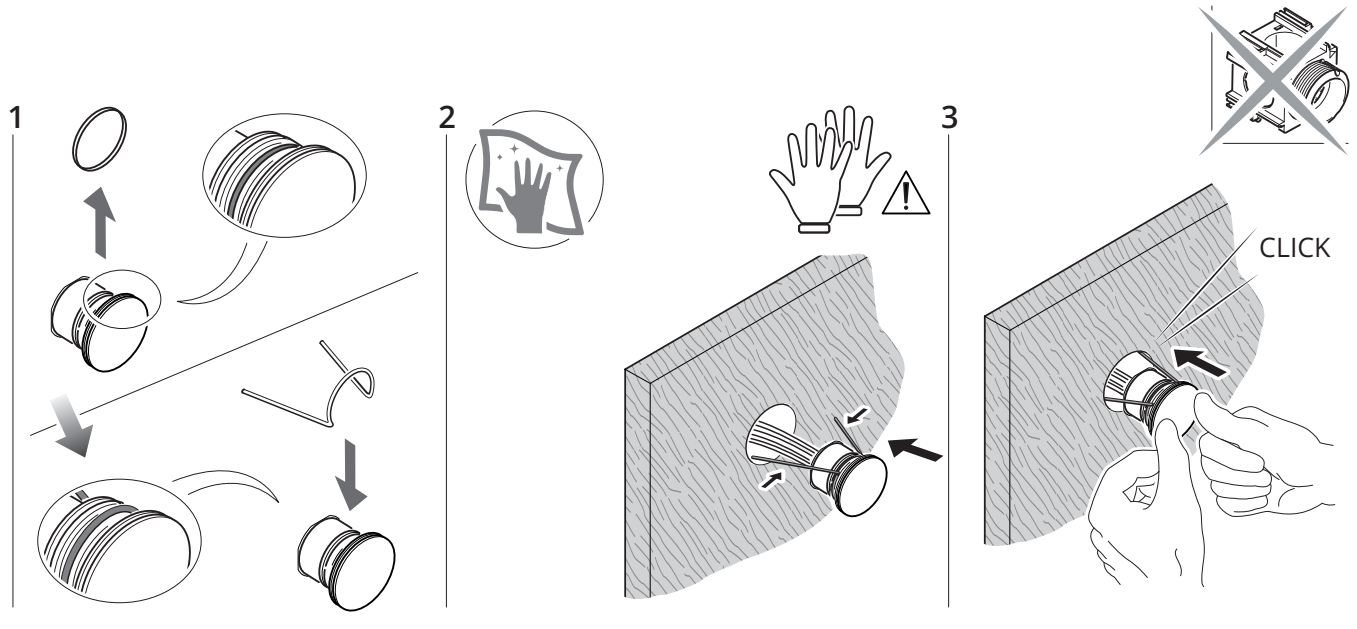
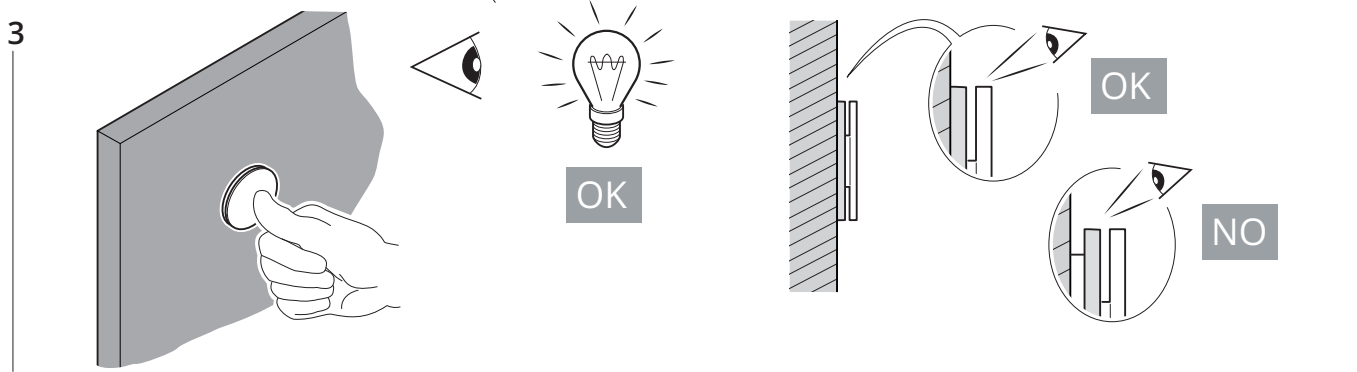
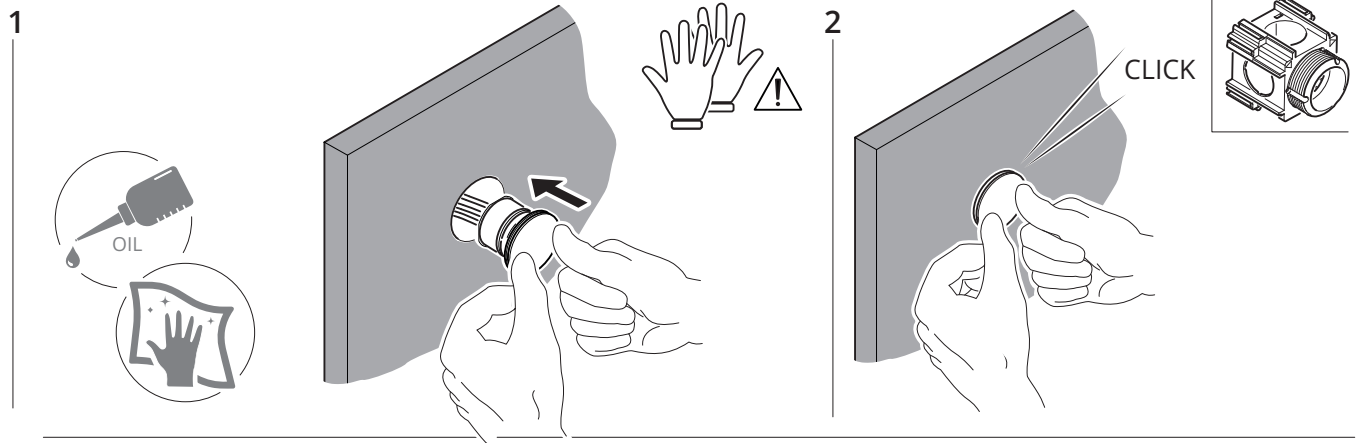
CONNECTION WITH BTICINO MYHOME BTI-3477



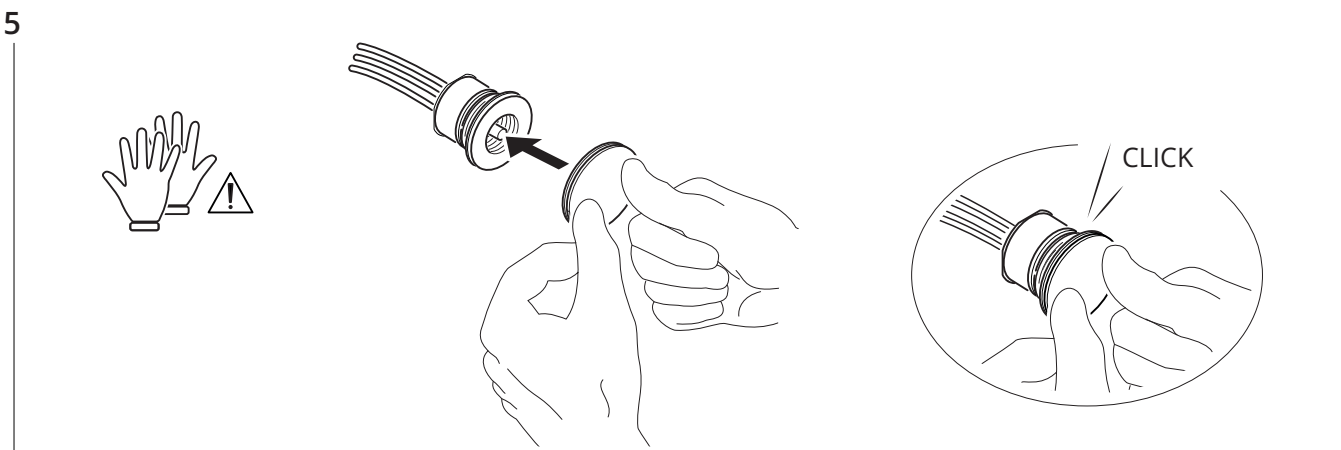
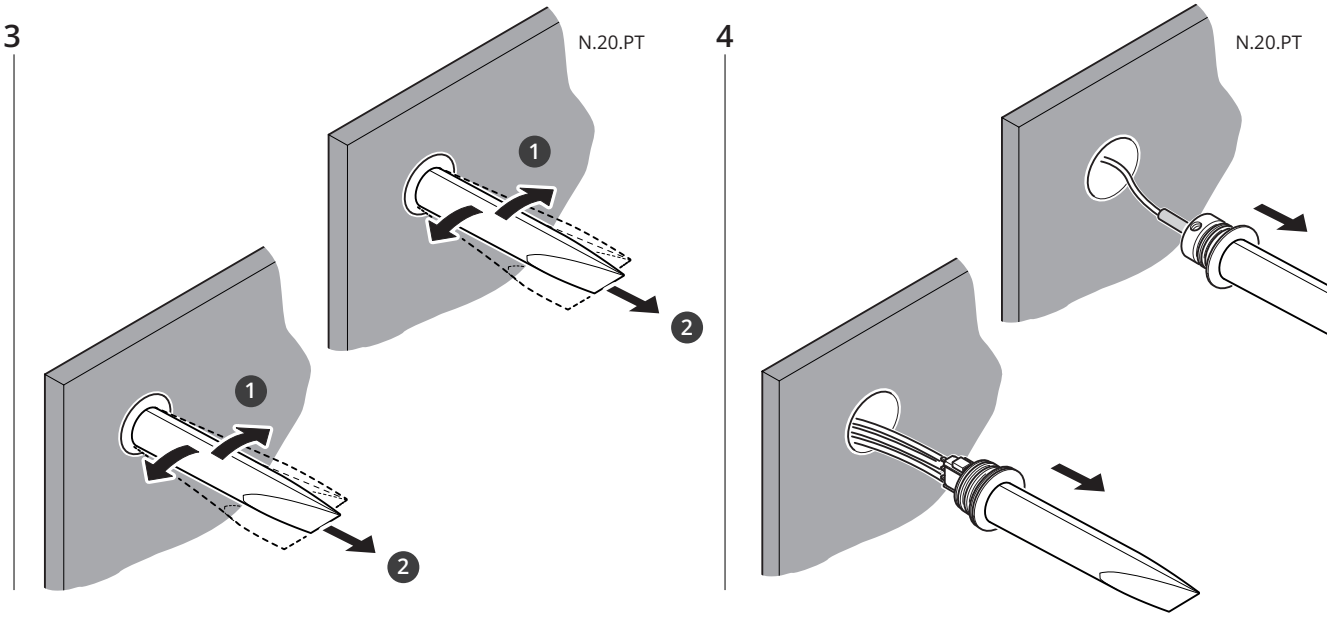
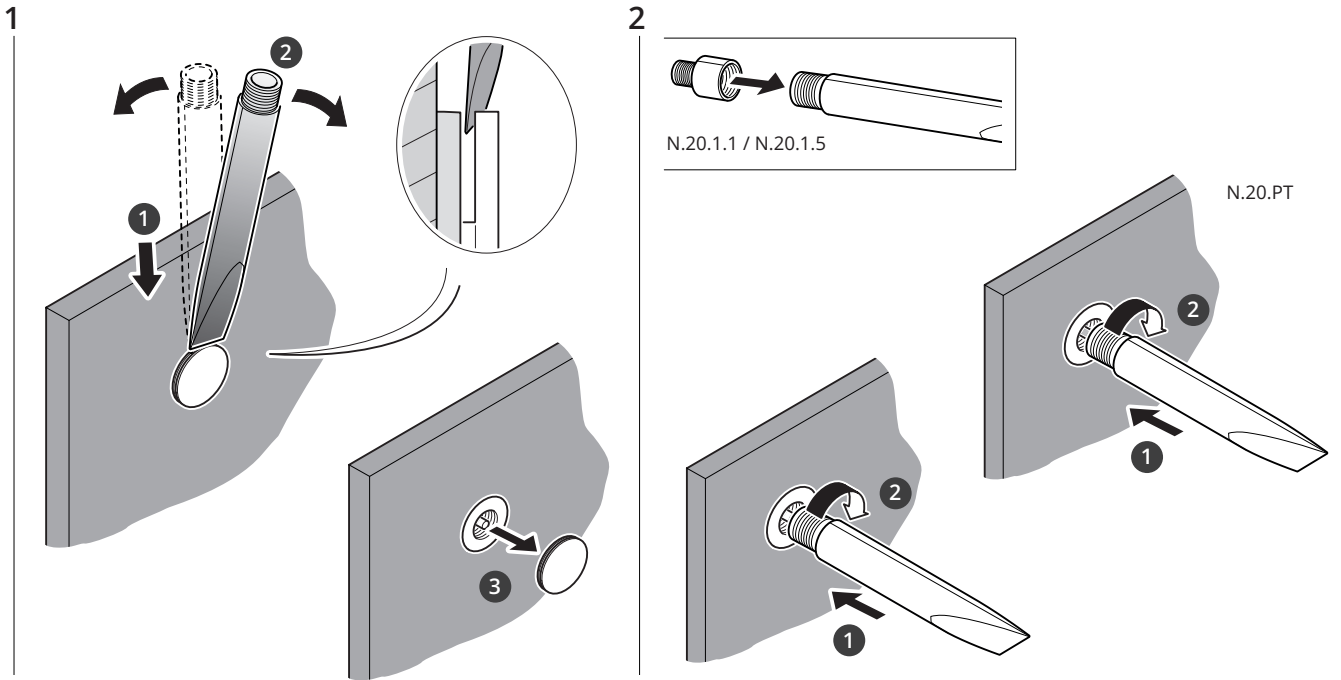
CONNECTION WITH LOXONE Nano DI Tree 100242



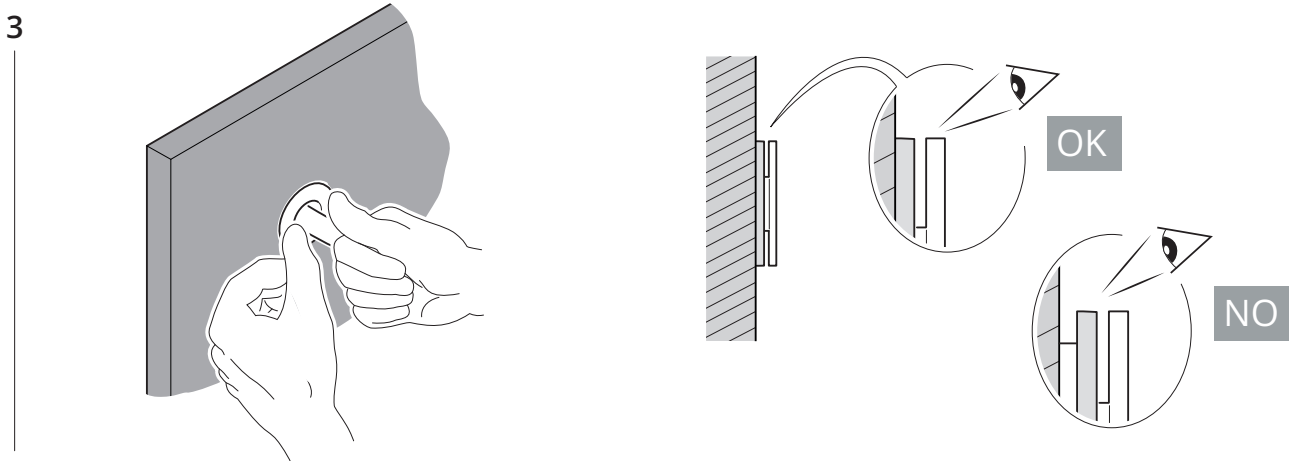
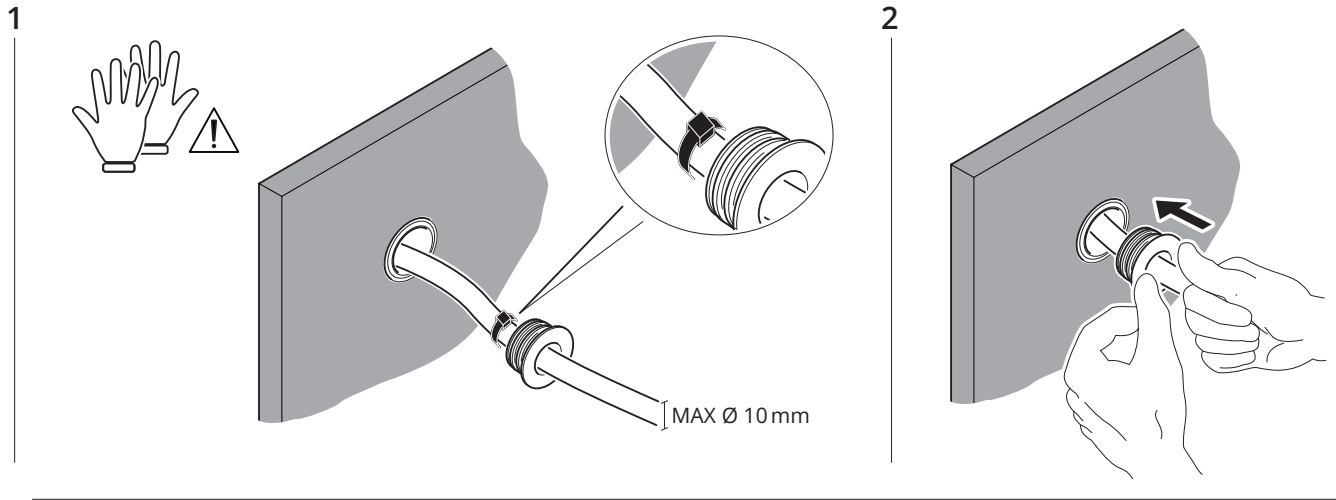
Montaggio - Assembly - Montage - Montage - Montaje - Монтаж - 装配



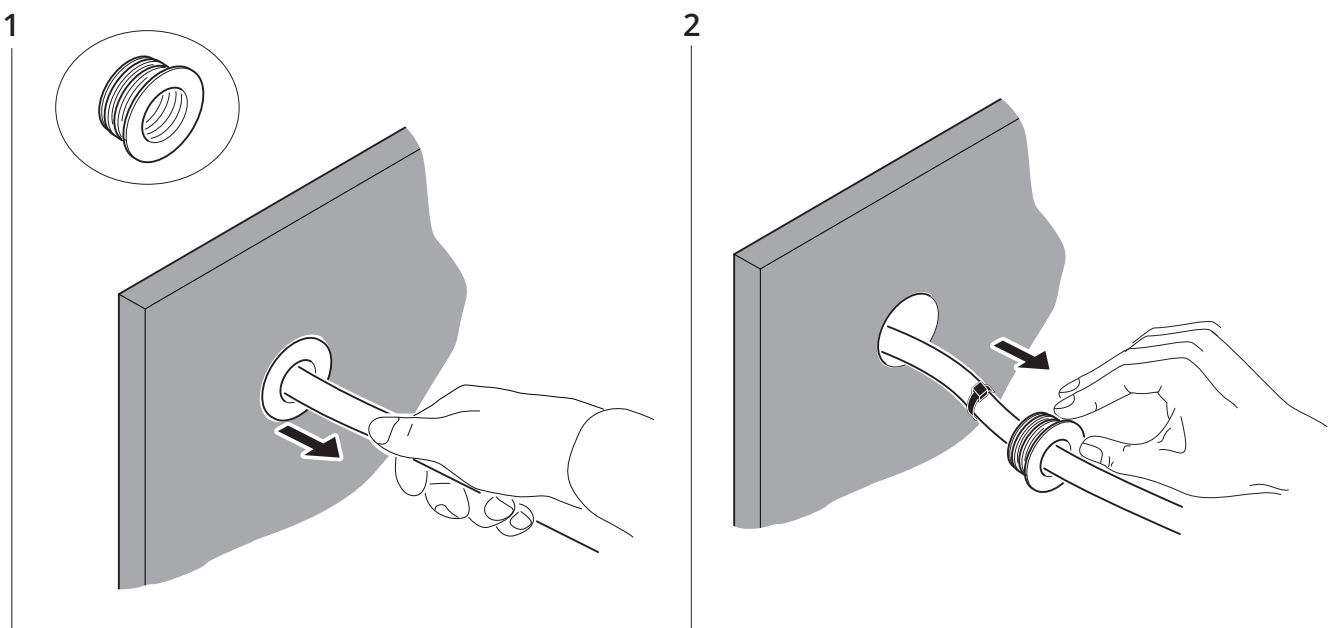
Smontaggio - Disassembly - Démontage - Ausbau - Desmontaje - Демонтаж - 拆卸



Montaggio passacavo - *Strain relief assembly* - Montage du passe-fil - *Montage der Kabeldurchführung* -
 - Montaje del aliviador de tensión - *Монтаж кабельного канала* - 穿线孔的安装



Smontaggio passacavo - *Strain relief disassembly* - Démontage du passe-fil - *Ausbau der Kabeldurchführung* -
 - Desmontaje del aliviador de tensión - *Демонтаж кабельного канала* - 穿线孔的拆卸



Pulizia e manutenzione - *Cleaning and maintenance* - Nettoyage et entretien - *Reinigung und Wartung* - Limpieza y mantenimiento - *Очистка и техническое обслуживание* - 清洁及维护

Non utilizzare spray, solventi, abrasivi o prodotti chimici. / Do not use any spray, solvents, abrasives or chemicals.

N'utilisez pas de sprays, de solvants, d'abrasifs ou de produits chimiques. / Keine Sprays, Lösungsmittel, Scheuermittel oder chemische Erzeugnisse verwenden.

Non utilizzare spray, solventi, abrasivi o prodotti chimici. / Не используйте спреи, растворители, абразивные средства или химикаты.

不要使用喷雾、溶剂、磨料或化学产品。



Panno Umido / Damp Cloth
Chiffon humide / Feuchtes Tuch
Paño Húmedo / Влажная ветошь
湿布

Utilizzare su tutti i prodotti non trattati
(materiale naturale).
Utilizzare su collezione Skin.

*Use on all products untreated
(natural material).
Use on the collection Skin.*

À utiliser sur tous les produits non traités
(matériau naturel).
À utiliser sur la collection Skin.

Auf allen unbehandelten Produkten verwenden
(naturbelassener Werkstoff).
Auf der Kollektion Skin verwenden.

Utilice sobre todos los productos no tratados
(material natural).
Utilice sobre colección Skin.

*Используйте для всех необработанных
поверхностей (натуральный материал).
Используйте для коллекции Skin.*

用于所有未经处理的产品
(天然材料)。
用于Skin系列。



Panno Asciutto / Dry Cloth
Chiffon sec / Trockenes Tuch
Paño Seco / Сухая ветошь
干布

Utilizzare su finiture trattate, salvo diverse
specifiche indicazioni.

*Use on treated finishes, unless different
specific indications.*

À utiliser sur les finitions traitées, sauf
indications contraires.

Auf behandelten Oberflächen verwenden, außer
anders lautenden Angaben.

Utilice sobre acabados tratados, con la excepción
de diferentes indicaciones específicas.

*Используйте для обработанных поверхностей, если
не указано иное.*

除非另有说明，
否则用于处理过的饰面。



Panno in Microfibra / Microfibre Cloth
Chiffon en microfibre / Mikrofaserstuch
Paño de Microfibras
Микроволоконная салфетка
微纤维布

Utilizzare su trattamenti galvanici
es. cromature, oro...

*Use on galvanic treatments
es. chrome, gold...*

Utilisation sur les traitements galvaniques
par exemple, le chromage, l'or...

Auf galvanischen Behandlungen,
z.B. Verchromung, Vergoldung... verwenden.

Utilice sobre tratamientos galvánicos
como cromados, oro...

*Используйте для гальванических
поверхностей, например для хромированных,
позолоченных и других отделок.*

用于电镀处理
如镀铬、金...

Smaltimento imballaggio - *Disposal of the packaging* - Élimination des emballages - *Entsorgung der Verpackung* - Eliminación del embalaje - *Утилизация упаковки* - 包装的处置

L'imballo deve essere smaltito secondo le specifiche normative locali vigenti.

Materiale esterno: Cartone e nastro adesivo.

Materiale Interno: Polietilene Reticolato.

*The packaging must be disposed of according to the specific local regulations
in force.*

External material: Cardboard and adhesive tape.

Internal material: Cross-linked Polyethylene.

L'emballage doit être éliminé conformément aux réglementations locales
spécifiques en vigueur.

Matériau extérieur : Carton et ruban adhésif.

Matériau interne : Polyéthylène réticulé.

Die Verpackung ist entsprechend der spezifischen örtlichen geltenden
Vorschriften zu entsorgen.

Äußeres Material: Karton und Klebeband.

Inneres Material: Vernetztes Polyethylen

El embalaje se debe eliminar según las normativas específicas locales vigentes.

Material externo: Cartón y cinta adhesiva.

Material Interno: Polietileno Reticulado.

Упаковка утилизируется в соответствии со специальным действующим
местным законодательством.

Наружный материал: Картон и клейкая лента.

Внутренний материал: Сшитый полиэтилен.

应根据当地现行法规处置包装。

外部材料：纸箱和胶带。

内部材料：交联聚乙烯。





Devices with soul.

Seguire sempre le norme di sicurezza
protegge te e chi ti sta vicino.

*Always follow the safety rules
protects you and those around you.*

Suivre toujours les règles de sécurité
protège vous-même et ceux qui vous entourent.

Stets die Sicherheitsvorschriften befolgen,
schützt Sie selbst und die umstehenden Personen.

Siempre siga las normas de seguridad,
protege a usted y a quienes le rodean.

*Соблюдение правил техники безопасности
защищает вас и окружающих людей.*

务必遵守安全规定
保护自己和身边的他人。

www.plhitalia.com



@plhitalia

#plhitalia
#shakeyourlight